

# Uganda: Gorilla Trekking with Wildlife Photographer Scott Portelli

Created for Scott Portelli  
By Arabella Worthington

**UK:** +44 (0) 1273 691 642  
**US Toll Free:** 1866 357 6569  
**AU Toll Free:** 1800 668 890  
**U.A.E Toll Free:** 8000 440 171  
[arabella@naturalworldsafaris.com](mailto:arabella@naturalworldsafaris.com)



UK Tel +44 (0) 1273 691 642  
US Toll Free 1866 357 6569  
Australia Toll Free 1800 668 890

[naturalworldsafaris.com](http://naturalworldsafaris.com)

3rd Floor, West Wing  
2 Bartholomews  
Brighton, BN1 1HG

 @natworldsafaris  
 Natural World Safaris

Natural World Safaris Ltd  
Registered in England, company number: 05649357  
Registered Office: Granta Lodge, 71 Graham Road, Malvern, Worcs, WR14 2JS

## YOUR JOURNEY AT A GLANCE

Day	Date	Travel/Activities	Accommodation
1	2 Apr	Entebbe - Bwindi Impenetrable National Park	Buhoma Lodge
2 - 3	3 – 4 Apr	Bwindi Impenetrable National Park	Buhoma Lodge
4	5, Apr	Optional Gorilla Trek & Batwa Community Visit	Buhoma Lodge
5	6, Apr	Bwindi Impenetrable National Park - Entebbe	Boma Guesthouse
6	7, Apr	Depart Entebbe	

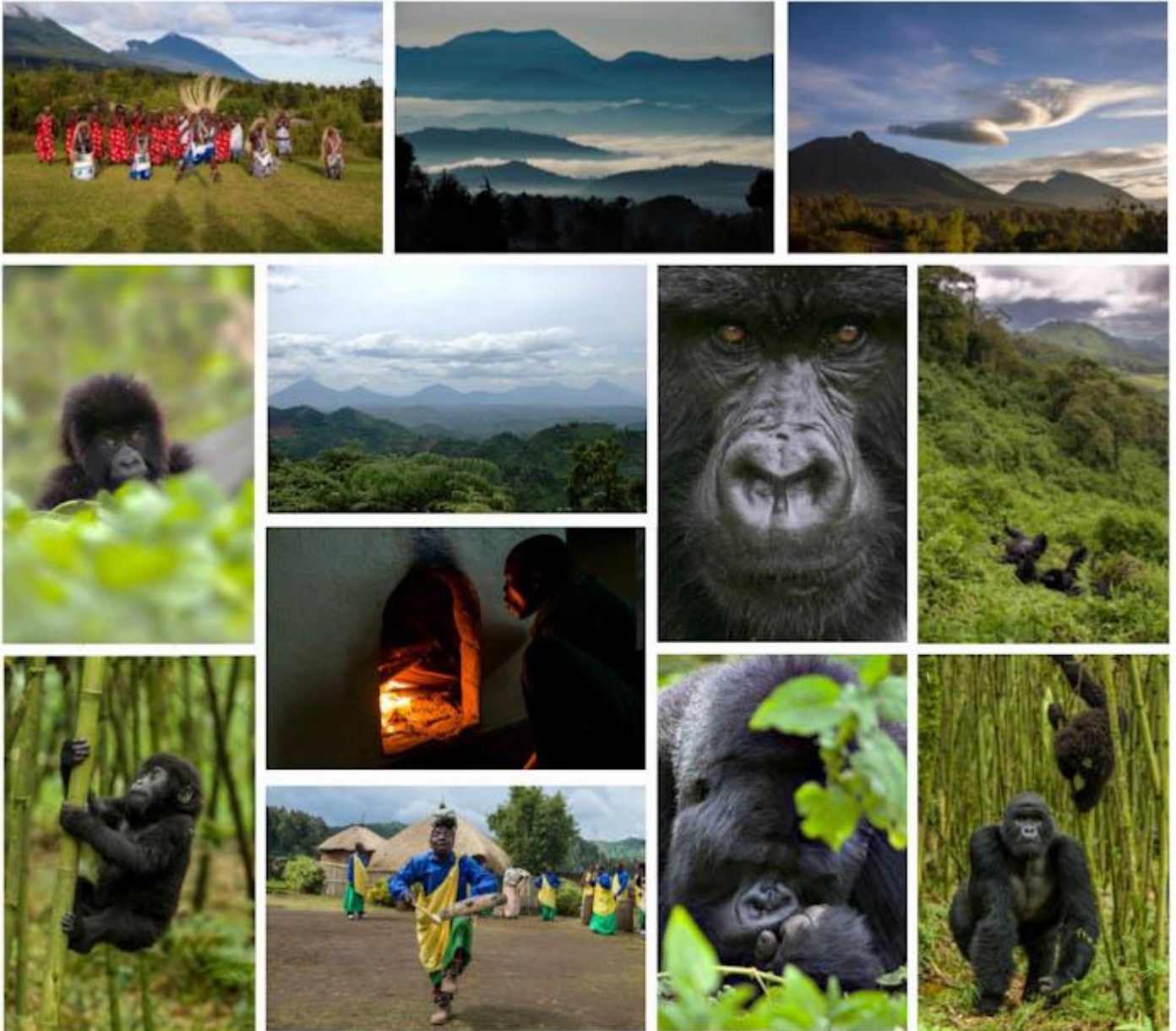
## HIGHLIGHTS

Tracking the mountain gorillas in the wild, twice!

Getting expert photographic advice from Scott Portelli



# NATURAL WORLD HIGHLIGHTS



# DAY BY DAY ITINERARY

## DAY 1



2 April 2017

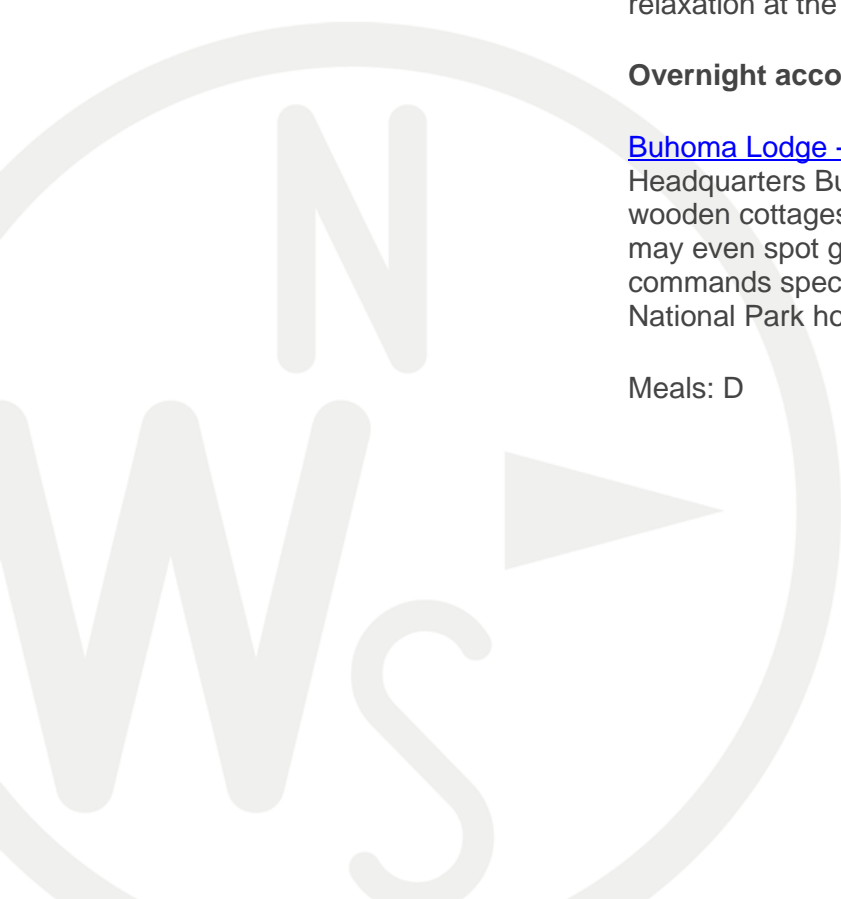
### Entebbe - Bwindi Impenetrable National Park

Upon arrival at Entebbe airport (before 1030), meet and greet and head to departures to check in for your Aerolink scheduled flight (1245/1355) to Kihiki airstrip where the lodge shared vehicles await to transfer you 2hrs to your Lodge. Afternoon relaxation at the lodge.

### Overnight accommodation

[Buhoma Lodge](#) - Located only a 5 minute walk from Bwindi Park Headquarters Buhoma Homestead consists of 8 traditionally built wooden cottages, with en-suite bathrooms. If you're lucky you may even spot gorillas walking past the property! Buhoma Lodge commands spectacular views of the Bwindi Impenetrable Forest National Park home to the rare Mountain Gorilla.

Meals: D



# DAY BY DAY ITINERARY

## DAY 2 – 3



3 – 4 April 2017

### **Bwindi Impenetrable National Park**

Two days of tracking! The Mountain Gorillas in Bwindi are part of a worldwide population of just 820. The gorillas you can track belong to one of three habituated family groups. For up to five years each, these groups have undergone an extremely delicate process that has gradually brought them to tolerate the presence of humans for a brief period every day and allowed a few privileged visitors to interact with them. The gorillas are by no means tame, and are completely wild. Experienced guides will accompany you, many of whom have been involved in the habituation process themselves. The guides will use their knowledge of the gorillas' habits and information from the previous day to locate the group's whereabouts. Because of this, the time taken to track the gorillas varies enormously, from as little as half an hour to 9 hours.

### **Overnight accommodation**

[Buhoma Lodge](#) - Located only a 5 minute walk from Bwindi Park Headquarters Buhoma Homestead consists of 8 traditionally built wooden cottages, with en-suite bathrooms. If you're lucky you may even spot gorillas walking past the property! Buhoma Lodge commands spectacular views of the Bwindi Impenetrable Forest National Park home to the rare Mountain Gorilla.

Meals: B,L,D

## DAY BY DAY ITINERARY

### DAY 4



5 April 2017

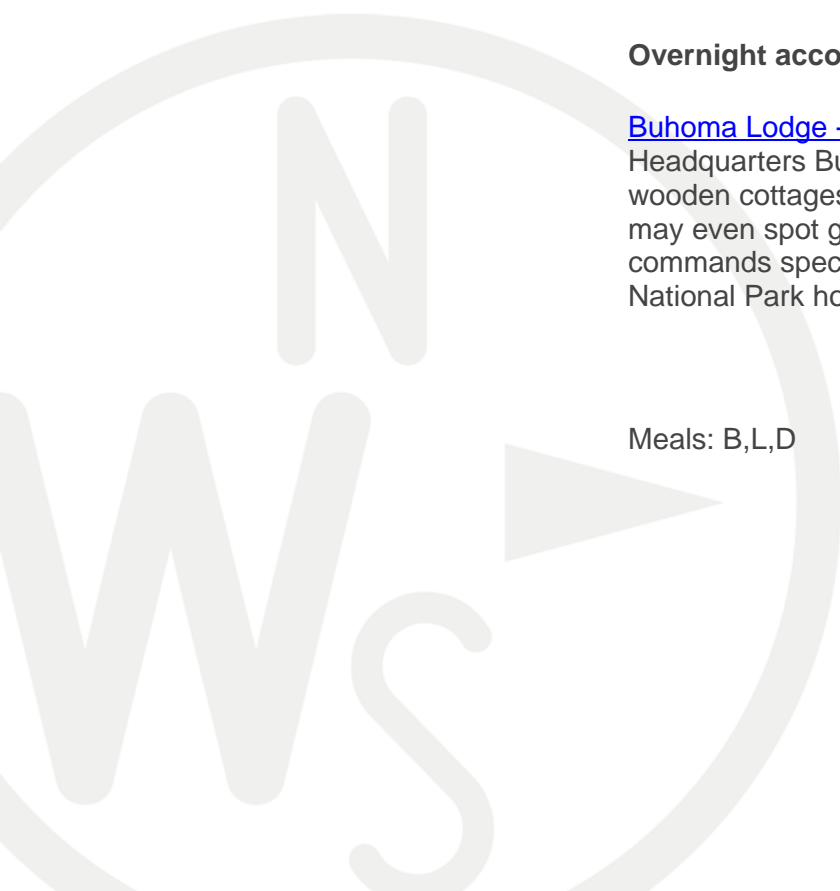
#### **Optional Gorilla Trek or Batwa Community Visit**

Today choose from a third gorilla tracking experience or a full day Batwa cultural hike experience. These activities must be booked at time of booking and are not included in the quote. For those who wish to relax at the lodge and recuperate after the last day's activities, then this is of course also an option!

#### **Overnight accommodation**

[Buhoma Lodge](#) - Located only a 5 minute walk from Bwindi Park Headquarters Buhoma Homestead consists of 8 traditionally built wooden cottages, with en-suite bathrooms. If you're lucky you may even spot gorillas walking past the property! Buhoma Lodge commands spectacular views of the Bwindi Impenetrable Forest National Park home to the rare Mountain Gorilla.

Meals: B,L,D



## DAY BY DAY ITINERARY

### DAY 5



6 April 2017

#### **Bwindi Impenetrable National Park - Entebbe**

Today take a morning (0930/1125) or afternoon (1405/1555) scheduled flight to Entebbe where you are met and transferred to Boma for relaxation or freshen up before you are later transferred back to the airport to check in for your International departure flight. If you wish, take a morning flight back to Entebbe and make an afternoon visit to Ngamba Island for the afternoon feeding of the Chimps (1245/1700). This will currently costs \$88pp but subject to a minimum of 4 people.

#### **Overnight accommodation**

[Boma Guesthouse](#) - The Boma Guesthouse is a charming property situated in a quiet area of Entebbe close to the international airport. The main house has a lounge and reception area to serve 15 African style rooms. There is a veranda overlooking the lovely tropical gardens and this is where meals are often served. With four poster beds and a swimming pool, The Boma is an ideal place to stopover before or after your flight (B)

Meals: B,L,D

# DAY BY DAY ITINERARY

## DAY 6



7 April 2017

### Depart Entebbe

You'll be driven to the airport for your onward flight.

Meals: B





# COSTS

Per Person Sharing: £3,400

Single Supplement: £195

**Includes:** accommodation & meals as stated (B-Breakfast, L-Lunch, D-Dinner), airport meet/greet & airport transfers as per itinerary, private professional English speaking driver/guide & private 4x4 vehicle, Scott Portelli photographer guide, transfers to all visited areas as per itinerary, park entrance fees as per itinerary, 2 gorilla permits per person, return flights from Entebbe – Kahihi - Entebbe

**Excludes:** international flights, possible fuel surcharge, possible departure tax, early & late check in/out at lodges/camps/hotels, visas, tips, items of personal nature, items not mentioned in the `Includes` section

## Optional Extras

Third gorilla permit: £350

Optional Batwa Community Visit: £90

Additional Seat on flight on flight from Bwindi to Entebbe: £240 per seat per way which gives another 40kgs in luggage (I would suggest getting 2 seats to allow for photography equipment)

Additional night at Boma Guesthouse: £80 per person sharing and £140 single room

Separate airport transfers (if arriving or departing at different times to the main group): £55 per vehicle per way

## NOTES

### **Please note the following:**

There is a minimum age of 15 for the gorilla treks

Subject to any additional VAT and Government charges that may be implemented between now and your departure date.

Gorilla permits are subject to availability until deposit is paid

Prices are subject to change/increase when 2017 prices are issued (approx. April 2016) unless deposit is paid before

Please note and advise clients that the luggage weight limit (inclusive of hand luggage) on the Aerolink flight from Kihikihi to Entebbe is 15kg per person. In case the client's luggage weight is more than 15kg pp, we will need to buy an extra seat or two on the flight (for each extra seat we get 40kgs more).

## WHY US?

At Natural World Safaris we are wildlife specialists, delivering some of the most immersive experiences available in the natural world. Our focus is creating extraordinary journeys, putting you in the right place at the right time for up close and personal encounters.

Whilst wildlife comes first, we maintain close links to some of the best luxury camps and lodges in the world so you can enjoy your safari in comfort.

### What makes us different?

- **Passionate, knowledgeable experts.** Our experts have extensive on-the-ground knowledge, years of experience and excellent relationships with local guides and conservationists. We will lead you to experiences you won't find in any guide book.
- **Extraordinary wildlife encounters.** This is our specialism. Creating wildlife experiences normally reserved for the likes of National Geographic or documentary makers.
- **Dedicated support.** From your first point of contact, throughout your safari and well beyond your return, we take care of you, so you can relax knowing you are in safe hands. Whilst you are away you'll have access to our 24/7 emergency line so that you can speak to somebody from our UK office at any time of night or day.
- **Personalised.** We take time to find out what will make your holiday extra special to you, making your itinerary personal to your interests, requirements and budget.
- **Everything taken care of.** We book and confirm every aspect of your trip before you leave home so you know exactly what to expect on your holiday. You'll receive all your travel documentation beautifully presented in one folder or smart phone app.
- **Brand values.** We actively support a number of conservation projects world-wide and demonstrate a continued, pro-active commitment to the conservation of wildlife habitats.
- **Awards and recognition.** In 2014 we were included in the prestigious Conde Nast Traveller Reader Awards as one of the top 10 specialist tour operators in the world. We also won two silver awards in the British Travel Awards; *Best Safari, Wildlife and Nature Company* and *Best Holiday Company to Sub-Saharan Africa*.
- **Industry Protection.** Natural World Safaris are members of ATOL and ABTOT providing financial protection for your holiday. Please see our website for further details regarding what is covered by these industry guarantees.

At Natural World Safaris we are proud to be known for our traditional values, solid ethics and the extraordinary journeys we craft for our clients. We believe the fact that over 80% of our clients have recommended us to others speaks for itself.

